



# Mini & Junior Rugby Festival

*Butlin's* Minehead, Somerset

Friday 4 - Monday 7 May 2012 (May Day Bank Holiday Weekend)

For further details of the Tigers Challenge please complete the form below and return to **ESF Events, 7 Bowley Court, Melton Mowbray, Leics, LE13 1XY**. Alternatively call ESF Events on **01664 566360** or email your details to **info@tigerschallenge.co.uk**

## Contact Details

Name of Club  Age Groups

Contact Name

Contact Address

Telephone (Day)  Mobile

Email

## Brochure Request

Please tick if you would like to receive a free copy of the 2012 Tigers Challenge brochure (available September 2012).

## Advance Registration

Your club has the opportunity to reserve places at the Tigers Challenge by making an Advance Registration. An Advance Registration does not constitute a confirmed booking and you will be under no obligation to this booking.

By paying an initial deposit of £250 per team, your Club will have the appropriate number of team places reserved for the Tigers Challenge at Butlins Minehead. The Advance Registration Deposit is fully refundable up to 14 days after receipt of the 2012 Tigers Challenge brochure if you decide you do not wish to attend the Festival. The 2012 brochure containing full details and terms & conditions of your booking will be posted to you by ESF Events in September 2012.

We would like to reserve places for teams at the following age groups

Approximate Number of people in Party: Adults  Children

**Payment by Cheque** I enclose a cheque for £  made payable to "ESF Events Ltd"

**Payment by Card** We welcome credit/debit card payments using Visa, Mastercard, Visa Debit/Delta, Maestro, Switch/Solo. Please note: a 2% charge will be added to credit card payments to cover bank charges. There is no charge for Debit/Delta, Maestro, Switch/Solo payments.

Please tick if you wish to make payments by credit/debit card. ESF Events will call you back to take your card details.

I have read and understand the conditions of making an Advance Registration as detailed above.

Signed

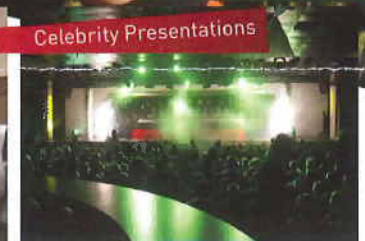
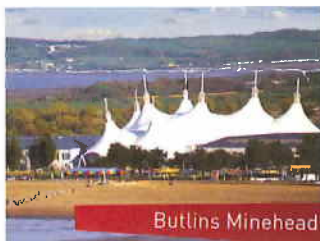
Date

### Financial Protection

ESF Events Ltd are bonded to protect all Advance Registration Fees paid. For full details please refer to the 2012 Tigers Challenge brochure.



If you're looking to make next season one to remember then look no further. ESF Events are delighted to announce the launch of the **TIGERS CHALLENGE** - a new mini and junior rugby festival supported by Leicester Tigers, which is set to become one of the most prestigious events of its kind in the UK.



The Tigers Challenge is a professionally organised two day festival, staged at Minehead Barbarians RFC, that will bring U7 - U14 teams from all over the UK together for a fantastic weekend of rugby. Players will also have the opportunity to participate in specialist skills sessions with Leicester Tigers coaches.

Butlins Minehead will play host to touring teams over the May Day Bank holiday weekend - a superb multi award winning holiday resort in Somerset. Located right on the beach, yet on the doorstep of the great wilderness of Exmoor National Park, Butlins really is a magnificent setting for a family rugby festival.

The accommodation, onsite facilities and entertainment at Butlins are fantastic for all age groups. There's the superb sub tropical Splash Waterworld, the biggest Aerial Rope Course in Europe, Funfair with free rides, Go-Kart track, Crazy Golf, Cinema, Ten Pin Bowling.....we could go on! There's a real buzz of excitement in the premier evening entertainment venues as stars you'll recognise from TV, tribute acts and live bands provide the hottest entertainment every night!

To cap off the weekend, our spectacular celebrity presentation ceremony will take place on the final evening where every team will get their moment of glory on stage with our special celebrity guest.

Going on tour provides a rare and exciting opportunity for players, coaches and supporters to build team spirit, morale and identity. The Tigers Challenge is an experience that everyone involved is sure to remember for years and years.

**Fri 4<sup>th</sup> - Mon 7<sup>th</sup> May 2012** (May Day B/H Weekend)

**ACCOM PRICES**  
Per person for 3 nights (Inc. VAT)

<b>Standard Apartment</b>	£99
<b>Silver Apartment</b>	£109
<b>Gold Apartment</b>	£119

Based on a minimum of 4 paying guests sharing an apartment  
4, 5, 6, 7 and 8 berth apartments available

Supported by



For full details of the Tigers Challenge please call ESF Events on **01664 566360** or visit [www.tigerschallenge.co.uk](http://www.tigerschallenge.co.uk) To reserve places for your club please complete the reservation form on the reverse of this flyer.